

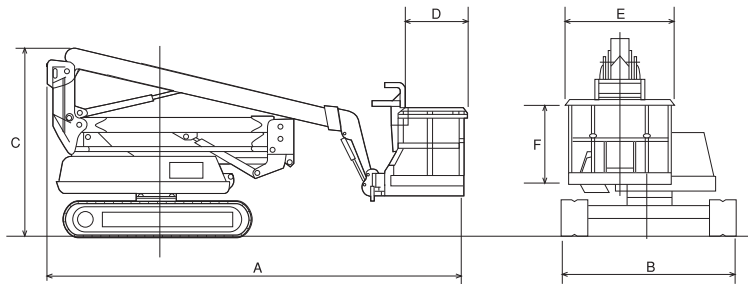
Boom Lift

Singapore NISHIO RENT ALL SINGAPORE PTE. LTD.

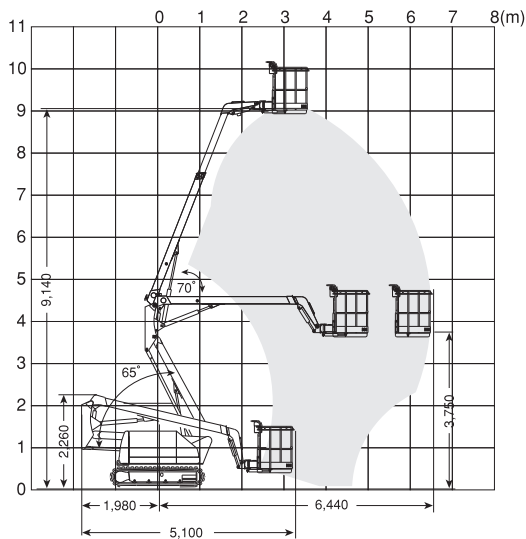
Crawler Type



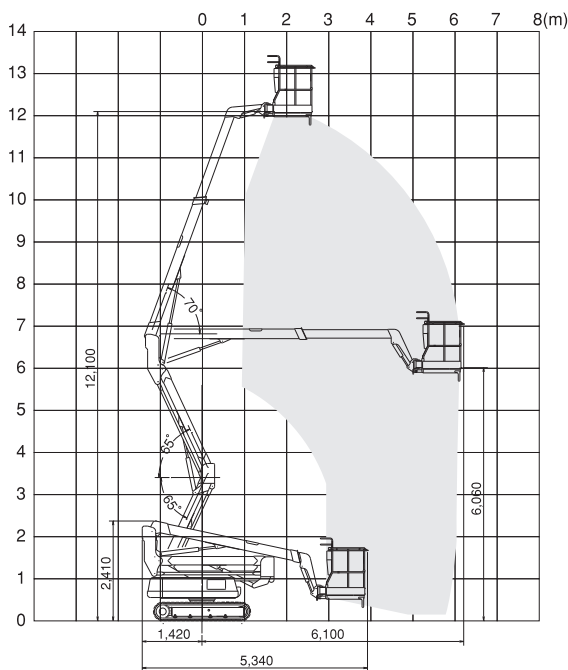
Dimension



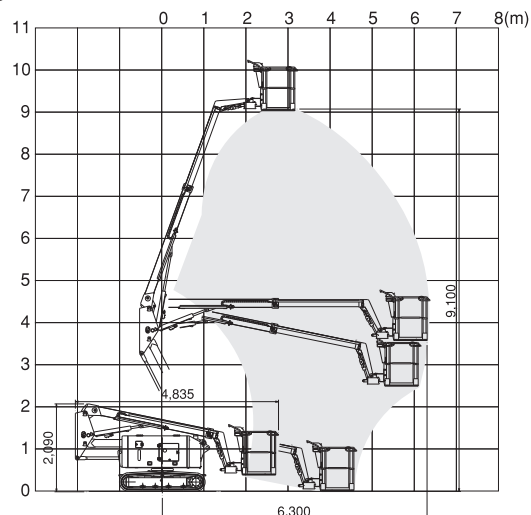
● NUL090



● HF120



● NAC91



Specifications

| MODEL | | NAC91 | NUL090 | HF120 |
|----------------------------|---------------------------|----------|----------|----------|
| Normal working height | | 11,100mm | 11,100mm | 14,060mm |
| Maximum height of platform | | 9,100mm | 9,100mm | 12,060mm |
| Travelling height | | 2,090mm | 2,180mm | 2,370mm |
| Safe working load | | 200kg | 200kg | 200kg |
| Dimensions | Overall length A | 4,830mm | 5,100mm | 5,338mm |
| | Overall width B | 1,750mm | 1,750mm | 2,050mm |
| | Overall height C | 2,090mm | 2,180mm | 2,370mm |
| Platform size | Length D | 732mm | 730mm | 730mm |
| | Width E | 1,142mm | 1,160mm | 1,130mm |
| | Guardrail height F | 1,000mm | 1,055mm | 1,055mm |
| Weight of complete unit | | 3,950kg | 3,750kg | 3,950kg |
| Maximum speed | | 1.8km/h | 1.5km/h | 1.3km/h |
| Fuel tank capacity | | 40L | 40L | 40L |